

# Creating the 5<sup>th</sup> Color Layer – White, in Adobe InDesign



This tutorial will explain and demonstrate how to create and use a **White** Spot Color on **Dark Colored Media**.

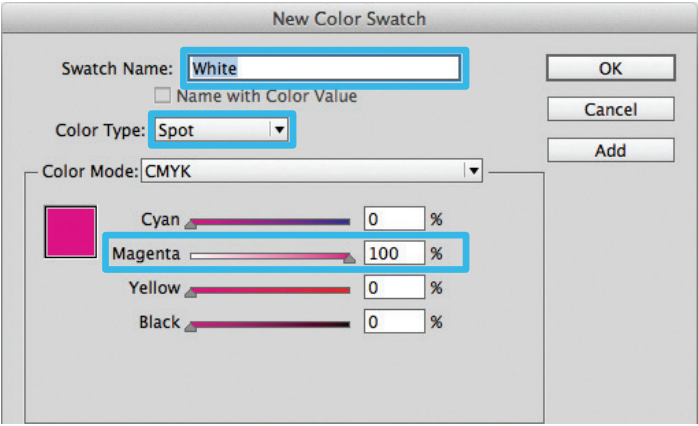
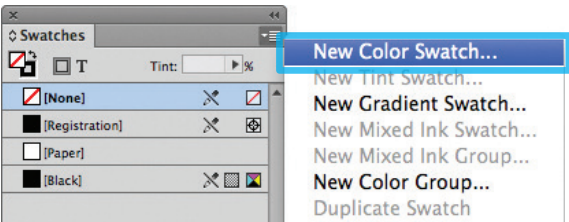
In this example, a swatch and layer will be created in InDesign, which will allow for the type and pattern of this invitation to be printed with **White Toner**.

Before areas of the file are applied, begin by creating a New Color Swatch, which Fiery® Command WorkStation will use when applying the White Toner.

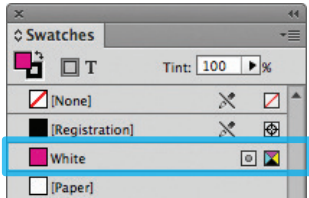
White vector on Dark Colored Media



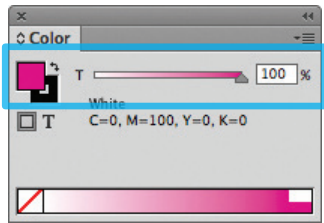
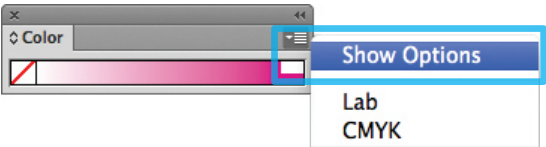
1. Open or create the InDesign (or Illustrator) file you are looking to enhance with White Toner.
2. Create a **New Color Swatch**.
  - a. Name the swatch “**White**.”
  - b. Select “**Spot**” for the Color Type.
  - c. It’s recommended to choose a color that stands out, such as 100% Magenta, to easily see where the White will print.



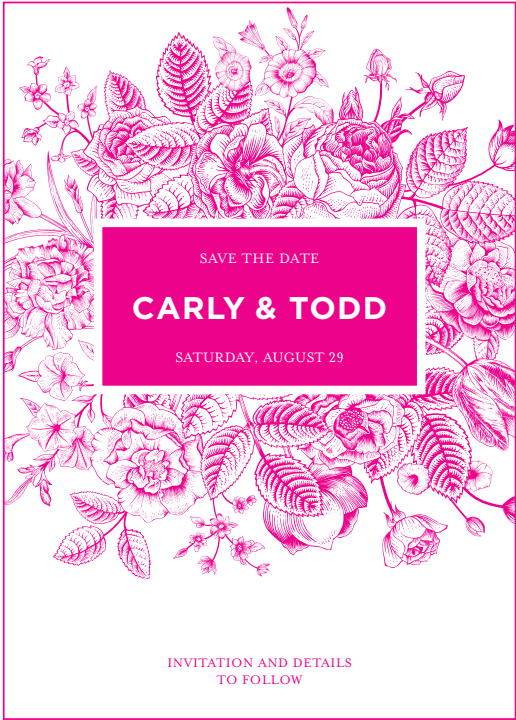
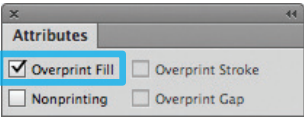
3. The White / Magenta Spot Color will represent the White Toner.



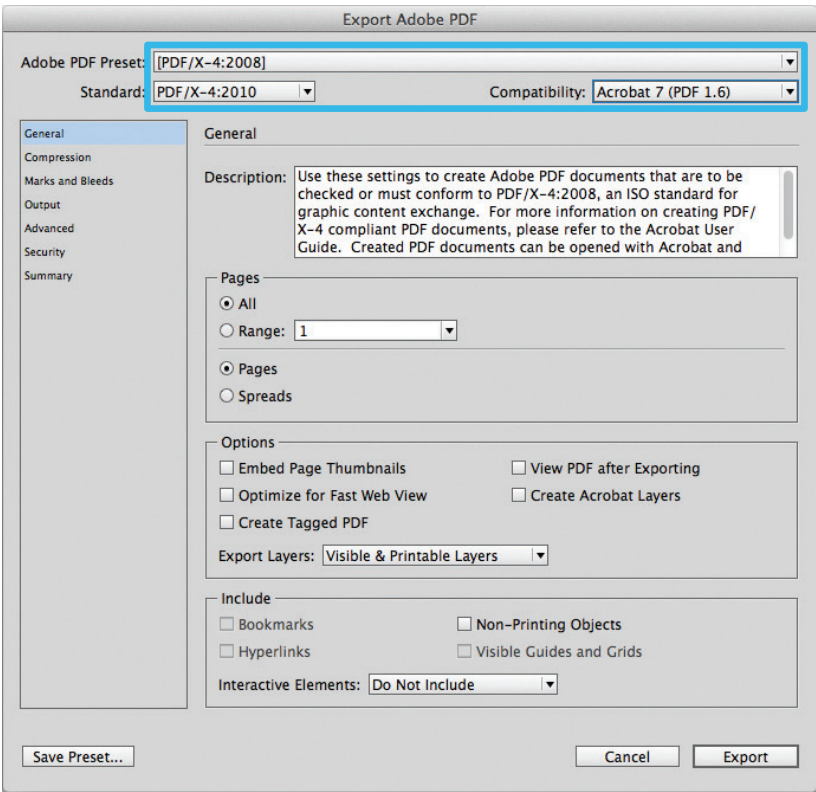
4. The amount of toner density can be adjusted in the color panel on the Density Scale.
  - a. From the Menu bar select “Window” then “Color” to display the Color Panel. If the Density Scale is not displayed, select *Show Options*.
  - b. Drag the Density Scale or enter the percentage in the box to adjust the density.



5. Now we can create Objects and fill with the 5<sup>th</sup> Color, White. Be sure to turn on **Overprint Fill**, under the Attributes panel.



6. Export / Save file as a PDF/X-4, (PDF1.6 or newer).



Refer to “Printing the 5<sup>th</sup> Color from Fiery® Command WorkStation” for steps on Printing PDFs.